

---

## KREISSIG AWARD

The AWARD was established in 2003 with contributions of ophthalmologists in West and East Europe and Asia in gratitude for the training Prof. Ingrid Kreissig bestowed upon them while Chairman of Retina and Vitreous Surgery at University of Tuebingen, Germany from 1979 to 2000 and at the 118 Teaching Courses on: Retinal and Vitreous Surgery, the Diabetic Eye and AMD which she directed in Europe, America, Africa and Asia.

She started graduate training with Fulbright Scholarship to study music and art at Western Reserve, Cleveland, USA. Upon returning to Germany, she turned to medicine, eventually to ophthalmology. Subsequently she was appointed as director of Dept. of Posterior Segment of Eye at Bonn Univ., founded by Meyer-Schwickerath. In 1969 a 3-year Scholarship/Fellowship to specialize in retina and vitreous surgery at New York Hospital-Cornell Medical Center where trained with Harvey Lincoff. She was selected for Chair in Retina and Vitreous Surgery at University of Tuebingen, Germany in 1979; in 1982 she was appointed by Jackson Coleman Adjunct Professor of Clinical Ophthalmology at Cornell, a position she has still up to now. In 2001 she joined Jost Jonas at University Mannheim – Heidelberg, Germany.

Since 1977 Prof. Kreissig has trained more than 300 ophthalmologists from various Eastern countries in an effort to open East to West Europe favouring a *transseuropean scientific and clinical exchange*. By a *transatlantic clinical and scientific collaboration*, started at Cornell in 1969, she has authored/co-authored 414 publications including 39 book chapters about retinal detachment, tumors, diabetic retinopathy, macular diseases; published 11 textbooks as single author and edited 4 on Diagnostics and Treatment of Retinal Detachments in: English, Italian, Spanish, Russian, Chinese, Japanese. In 1992 she received Award of Merits in Retina Research from Retina Society, in 2000 Custodis Award from DOG, in 2002 Lincoff Lecture from Cornell Univ, in 2005 Senior Achievement Award from AAO, in 2006 Winifred Mao Lecture from Asia-Pacific Vitreoretina Society, in 2007 Medal of Mexican Ophthalmological Society, in 2007 Gold Medal of Algerian Ophthalmological Society, in 2008 Keynote Lecture of British Midland and Northern Ophthalmological Society, Sheffield, UK, in 2011 Professor h.c. from Ufa Eye Research Institute, in 2013 WIO Bernice Brown Memorial Award Lecture. Prof. Kreissig is an honorary member of many Ophthalmological Societies in East and West.

---



**Emily Y. Chew, MD**

### **“Nutrition, Genes and Age-Related Macular Degeneration: What have we learned from the trials?”**

Emily Chew is the Deputy Director of the Division of Epidemiology and Clinical Applications (DECA) at the National Eye Institute, the National Institutes of Health in Bethesda, Maryland. She is also the Chief of the Clinical Trials Branch within the Division. She received her medical degree and her ophthalmology training at the University of Toronto, School of Medicine, in Toronto, Canada. She completed her fellowship in Medical Retina at the Wilmer Eye Institute, the Johns Hopkins Medical Institutes and the University of Nijmegen, the Netherlands, in Medical Retina.

Her research interest includes phase I/II clinical trials and epidemiologic studies in retinovascular diseases, such as age-related macular degeneration, diabetic retinopathy, and others. She worked extensively in large multi-centered phase 3 trials headed by the staff of NEI/NIH including the Early Treatment Diabetic Retinopathy Study, the Age-Related Eye Disease Study and the Age-Related Eye Disease Study 2, which she chairs. She also chairs the Actions to Control Cardiovascular Risk in Diabetes (ACCORD) Eye Study in participants with type 2 diabetes. Emily Chew is also the director of the clinical program in the Macular Telangiectasia Project (Mac Tel Project) which is an international study conducted in 22 clinics in 7 countries along with 4 basic science laboratories. Emily Chew has numerous collaborators throughout the United States and internationally. She has published more than 300 peer-reviewed journal articles and numerous chapters. She is a member of the editorial board of Ophthalmology, IOVS and Retina.

Emily Chew’s commitment and dedication to clinical research, specifically clinical trials, has been recognized by various professional societies and foundations including the Alcon Research Institute, the Retina Society, the Macula Society, the Helen Keller Foundation and the Bressler Award in Vision.

---

## KREISSIG AWARD

2004 Rosangela Lattanzio, MD (Italy)

2005 Stanley Chang, MD (USA)

2006 Carol S.L. Shields, MD (USA)

2007 Yasuo Tano, MD (Japan)

2008 Julia Haller, MD (USA)

2009 Harvey Lincoff, MD (USA)

2010 Martine J. Jager, MD, PhD (Netherlands)

2011 Laurence A. Yannuzzi, MD (USA)

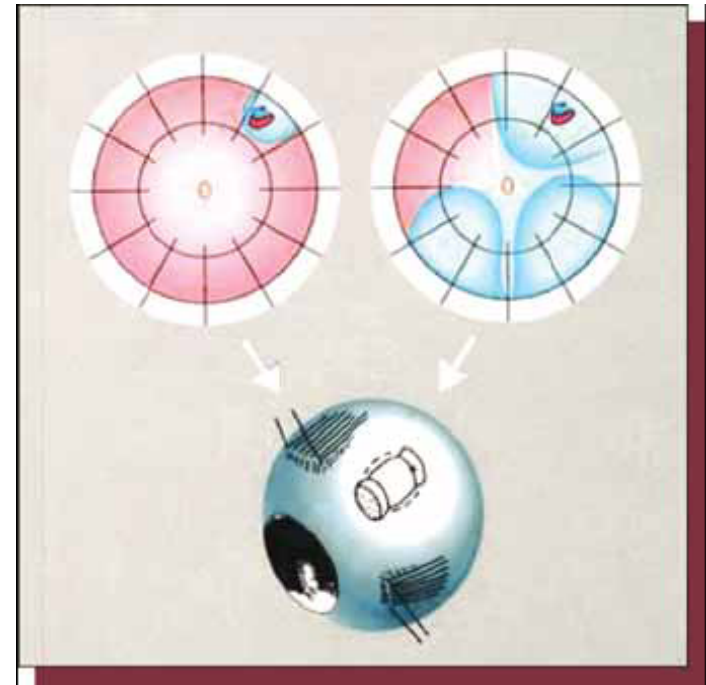
2012 Gisèle Soubrane, MD, PhD (France)

2013 Mark S. Blumenkranz, MD, MMS (USA)

2014 Johanna M. Seddon, MD, ScM (USA)

2015 Bill Aylward, MD, FMD, FRCS FRCOphth (UK)

2016 Emily Chew, MD (USA)



## THE 2016 KREISSIG AWARD

*given for outstanding contributions in the  
understanding and treatment of retinal diseases to*

**Emily Chew, MD**

16th EURETINA Congress, September 8-11, 2016  
Copenhagen, Denmark