

05.10.

10.00-10.30 COFFEE

DIABETIC NEUROPATHY

Chairs: Agnese Fiori,
Lucas Wigganhauser

not presented

SP13 Altered cell-cell interactions in experimental diabetic neuropathy – Are they contributing to pain?

10.30-10.45 **Magdalena Nguyen**

SP14 Diabetic thin fiber neuropathy - objective assessment and mechanisms

10.45-11.00 **Mira Klix**

SP15 Identification of tissue specific changes within the nociceptive system in diabetic peripheral neuropathy – contribution of TRP channels

11.00-12.30 **Lab-Tour**
PI-Meeting

12.30-13.30 LUNCH

PI PRESENTATIONS

13.30-13.45 **Karen Bieback**

Adipose stromal cells: immunomodulatory and trophic effectors in diabetic retinopathy

13.45-14.00 **Jan-Luuk Hillebrands**

The secreted Klotho mRNA transcript is continuously degraded by nonsense-mediated mRNA decay and its splicing is dysregulated by kidney damage

05.10.

14.15-14.30 **Marc Freichel**

SP16 Hyperglycemia-evoked alterations in Ca²⁺ homeostasis and in Ca²⁺-dependent translational profiling in endothelial cells

14.30-14.45 **Jonathan Sleeman**

SP17 The contribution of glomerular endothelial cells to hyperglycemia-induced glomerular basement membrane thickening, and its effect on modified hyaluronan metabolism, inflammation and fibrosis during the development of diabetic nephropathy

14.45-15.15 COFFEE

15:15-15:30 **Guido Krenning**

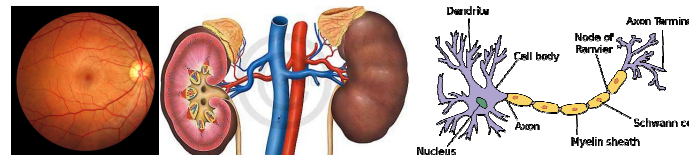
Mitochondrial Medicines in diabetes: Should we target ROS?

15.30-16.15 **Prof. Dr. Stephan Herzig**,
München

The mouse as a model for research in metabolism and obesity

17.00-21.00 **HISTORIC TRAM RIDE and DINNER**

Departure 'Universitätsklinikum'



**International Research
Training Group
GRK 1874/1
"DIAMICOM"**

Spokespersons:
Prof. Dr. H.-P. Hammes
Prof. Dr. H. Moshage



**Autumn
School**

04.10.-05.10.2016

**Venue:
Patientenhaus,
Raum Weitblick**

04.10.

14.30-14.45 COFFEE
14.45-15.00 Welcome Address

GENERAL MECHANISMS

Chairs: Katharina Kohl,
Matthias Kolibabka

15.00-15.15 **Beatrix Fuchs**
SP1 Detoxifying enzymes in diabetic target tissues – mitochondrial dependent and independent effects of methylglyoxal

15.15-15.30 **Gregor Jainta**
SP2 Targeting Angiopoietin-2 in diabetic complications

15.30-15.45 **Marije Mossel**
SP3 Hyperglycemia induced monocyte-macrophage differentiation

15.45-16.00 **Sarah Albrecht**
SP4 Kv channels in myogenic and perivascular fat-dependent autoregulation and small artery diabetic dysfunction

16.00-16.30 COFFEE



16.30-17.15 **Prof. Dr. Annette Schürmann**, Potsdam-Rehbrücke
Graduate education within the German diabetes research landscape + Research

04.10.

DIABETIC RETINOPATHY

Chairs: Gregor Jainta,
Jana Löwen

17.15-17.30 **Katharina Kohl**
SP5 Hyperglycemic memory mechanisms relevant to the diabetic retina

17.30-17.45 **Agnese Fiori**
SP6 Impact of adipose-derived stromal cells on diabetic and proliferative retinopathy

17.45-18.00 **Marcus Dannehl**
SP7 Micro-RNA induced microangiopathy in diabetes

18.00-19.30 DINNER
Patientenhaus



19.30-20.30
Prof. Dr. Erwin Schleicher, Tübingen
The history and modern concept of AGEs

21.00- PUB

05.10.

06.15 *Jogging at the Neckar*
Contact Eric Brandhorst
Meeting Point: Patientenhaus



DIABETIC NEPHROPATHY

Chairs: Marije Mossel,
Björn Hofmann

09.00-09.15 **Ali Haider Utsho**
SP9 The function of the Rac1 regulator ELMO1 in the vasculature and in renal development under high glucose in zebrafish and in human diabetic nephropathy

09.15-09.30 **Christoph Hangel**
SP10 Role of iron-dependent oxidative carbonylation in the course of diabetic nephropathy

09.30-09.45 **Angelica Rodriguez**
SP11 Carnosinase in hyperglycemia: Influence on CN-1 secretion and relevance for damage to glomerular endothelial cells

09.45-10.00 **Jiedong Qiu**
SP12 Diabetic nephropathy in the BTBR Ob/Ob mouse as a pre-clinical model for therapeutic interventions

